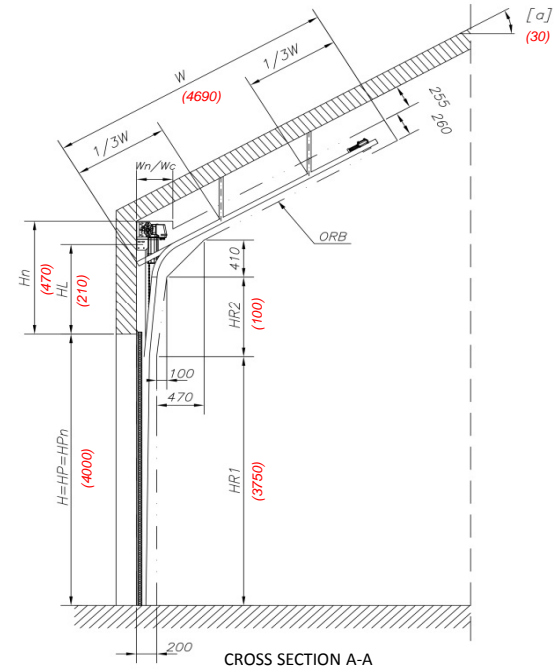
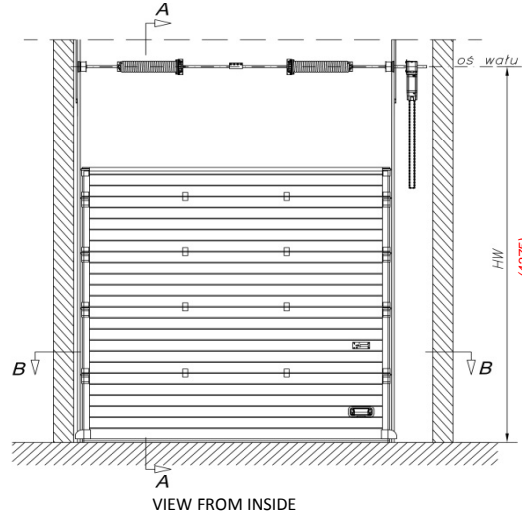
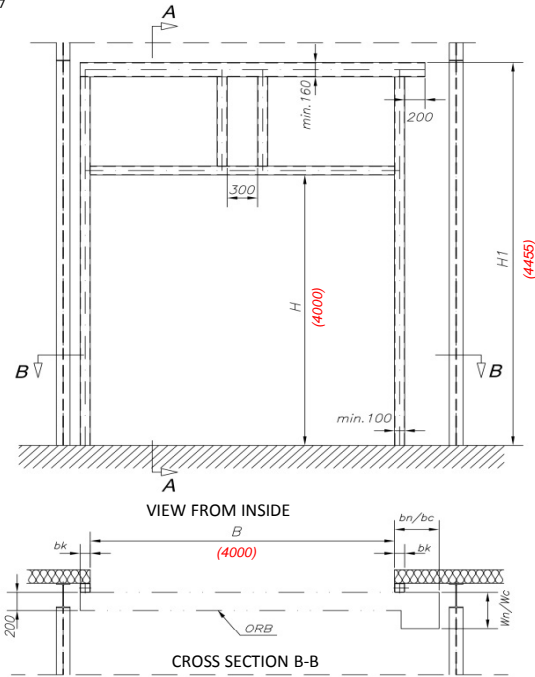


### "FHL" HIGH ALONG ROOF CONSTRUCTION

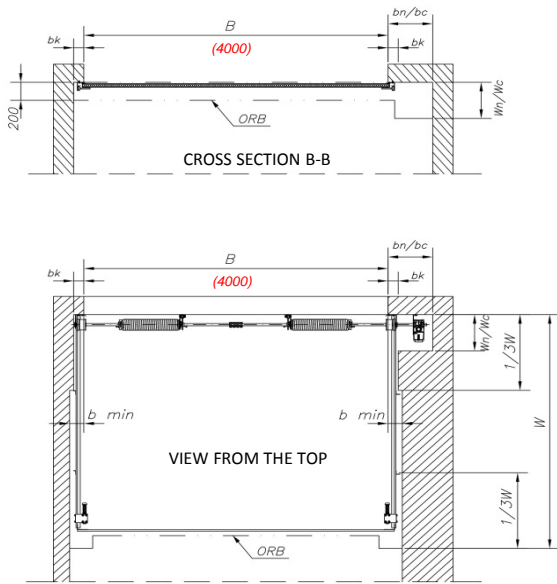
1. The doors are produced to sizes according to actual pricelist KRISPOL.
2. To adjust the picture to selcted size it needs to be accordingly enlarged/reduced.
3. The exact value of Wn by using different types of drives according to actual Krispol price
4. Application of the relevant product is a prerequisite for its proper functioning.
5. To select the optimal solution, please contact your representative of Krispol company -->>> [www.krispol.eu](http://www.krispol.eu)



**DESCRIPTION OF DIMENSIONS:**

- ORB - workspace of the door
- B - opening width
- H - opening height
- Hn - headroom height
- bk - sideroom width with mounting bracket
- b min - sideroom width including perforated angles
- bc - sideroom width on chain mechanism side
- bn - sideroom width on drive side
- HP - passage height in the hand-operated door
- HPn - passage height in door with drive
- HL - overlap height
- HR1-2 - workheight
- HW - height from the floor to axle shaft
- W - built-in depth (hand-operated door)
- Wn - built-in depth (drive-operated door)
- WC - built-in depth for chain mechanism
- H1 - height from the floor to the upper edge of supporting structure
- Q - curtain's weight [kg/m<sup>2</sup>]
- P - area of door's curtain [m<sup>2</sup>]
- a - decrease of roof slope

SYMBOL	SIZE LIMIT [mm]			DIMENSIONS ON THE DRAWING [mm]		
B	max.8000			4000		
H	max.4800	max.4800	max.5800	4000		
HL	max.1320	max.3000	max.2850	210		
	min.210	min.1320	min.210			
Hn	HL+260	HL+325	HL+360	470		
HW	H+HL+165	H+HL+206		4375		
H1	H+HL+245	H+HL+286		4455		
W	H-HL+900			4690		
bk	min.100			100		
b min	min.140			140		
bc	min.260			260		
bn	min.440			440		
HP	H			4000		
HPn	H			4000		
HR1	H-250			3750		
HR2	HL-110			100		
α	5°+60°			30		
Wn	400			400		
Wc	270			270		
P	Q	K2 IS	P=max.32 [m <sup>2</sup> ]	Q=max.13 [kg/m <sup>2</sup> ]	16,00 [m <sup>2</sup> ]	390,0 [kg]
		K2 IM	P=max.32 [m <sup>2</sup> ]	Q=max.13 [kg/m <sup>2</sup> ]		
		K2 IP	P=max.31 [m <sup>2</sup> ]	Q=max.13 [kg/m <sup>2</sup> ]		
		K2 IA	P=max.32 [m <sup>2</sup> ]	Q=max.7 [kg/m <sup>2</sup> ]		



		KRISPOL Sp. z o.o.	
		ul. Budowlana 1 Psary Małe, 62-300 Września	
INDUSTRIAL SECTIONAL DOOR			
"FHL" HIGH ALONG ROOF CONSTRUCTION			
Format	A3	Scale	1:50
Type	K2 I	Drawing No	XYZ_K2IS_HL_4000x4000_2018-8-7