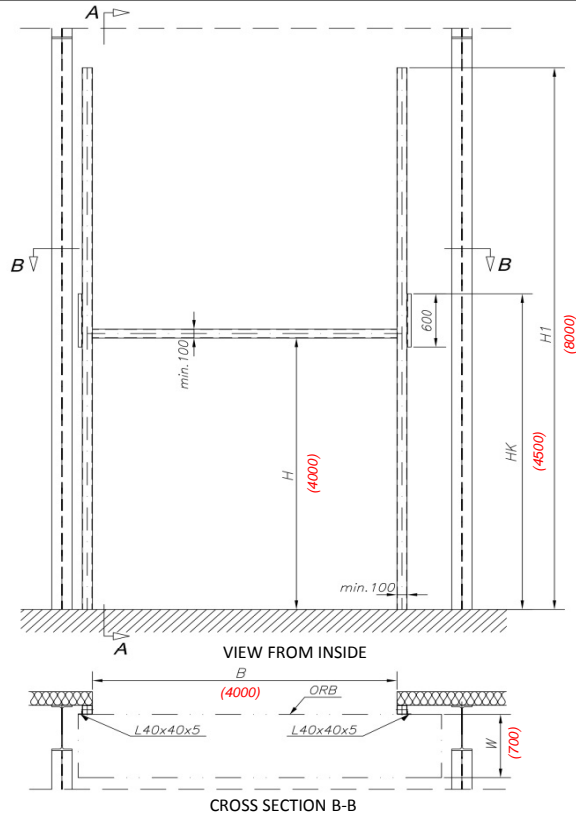
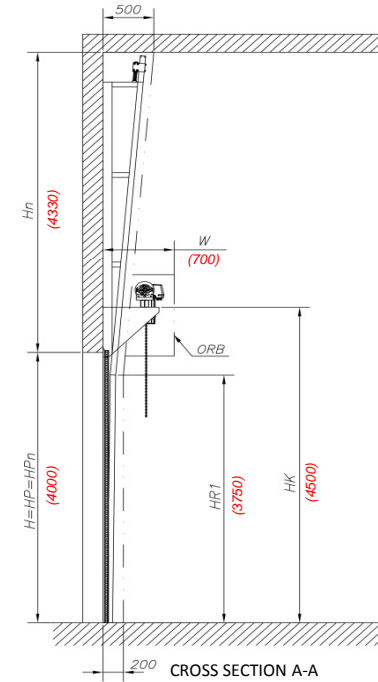
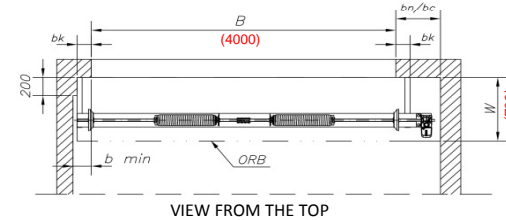
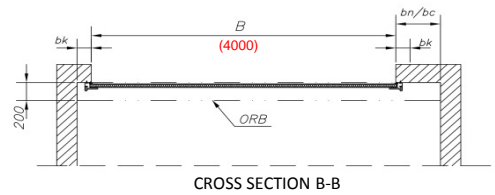
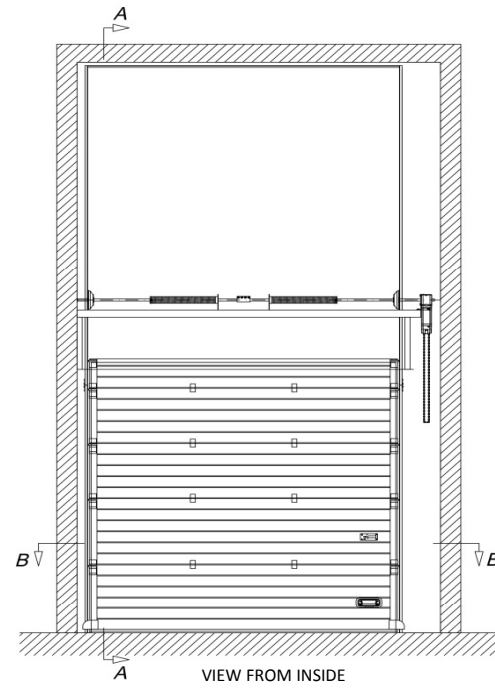


1. The doors are produced to sizes according to actual pricelist KRISPOL.
2. To adjust the picture to selected size it needs to be accordingly enlarged/reduced.
3. The exact value of W_n by using different types of drives according to actual Krispol price
4. Application of the relevant product is a prerequisite for its proper functioning.
5. To select the optimal solution, please contact your representative of Krispol company -->>>
www.krispol.eu



"VL-K" VERTICAL ON WALL BRACKETS



- DESCRIPTION OF DIMENSIONS:**
- ORB - workspace of the door
 - B - opening width
 - H - opening height
 - Hn - headroom height
 - bk - sideroom width with mounting bracket
 - b min - sideroom width including perforated angles
 - bc - sideroom width on chain mechanism side
 - bn - sideroom width on drive side
 - HP - passage height in the hand-operated door
 - HP+n - passage height in door with drive
 - HR1 - workheight
 - HK - height from the floor to the bottom
 - W - built-in depth (hand-operated door)
 - H1 - height from the floor to the upper edge of supporting structure
 - Q - curtain's weight [kg/m²]
 - P - area of door's curtain [m²]

SYMBOL	SIZE LIMIT [mm]	DIMENSIONS ON THE DRAWING [mm]	
B	max.5500	4000	
H	max.5500	4000	
Hn	min. H+330	4330	
H1	2H	8000	
HK	H+500	4500	
W	700mm	700	
bk	min.140	140	
b min	min.180	180	
bc	min.300	300	
bn	min.440	440	
HP	H	4000	
HPn	H	4000	
HR1	H-250	3750	
P	K2 IS	P=max.32 [m ²]	Q=max.13 [kg/m ²]
	K2 IM	P=max.32 [m ²]	Q=max.13 [kg/m ²]
	K2 IP	P=max.31 [m ²]	Q=max.13 [kg/m ²]
	K2 IA	P=max.32 [m ²]	Q=max.7 [kg/m ²]
		16,00 [m ²]	208,0 [kg]
			112,0 [kg]

KRISPOL KRISPOL Sp. z o.o.
ul. Budowlana 1
Psary Małe, 62-300 Września

INDUSTRIAL SECTIONAL DOOR

"VL-K" VERTICAL ON WALL BRACKETS

Format A3 Scale 1:50 Type K2 I Drawing No XY_Z_KzIS_VL-K_4000x4000_2018-8-7